

GENERAL NOTES:

1. DESIGN AND CONSTRUCTION OF ALL WORK ON THIS PROJECT SHALL CONFORM TO LATEST EDITIONS OF THE FOLLOWING:
- NATIONAL BUILDING CODE

- ONTARIO BUILDING CODE

- LOCAL REGULATIONS

- OSHA REGULATIONS
2. DRAWINGS ARE NOT TO BE SCALED.
3. THE CONTRACTOR SHALL CHECK AND VERIFY ALL SITE CONDITIONS AND MEASUREMENTS AND REPORT ANY DISCREPANCIES TO THE ENGINEER.
4. NO CHANGES SHALL BE MADE WITHOUT THE ENGINEER'S APPROVAL.
5. OWNER HEALTH AND SAFETY TO SET UP BEST PRACTICES/PROCEDURES FOR MOBILE PLATFORM USE.

STEEL NOTES:

1. ALL DIMENSIONS ARE IN INCHES UNLESS NOTED OTHERWISE.
2. ALL HOLE SIZES ARE 13/16" DIAMETER UNLESS OTHERWISE NOTED.
3. ALL BOLTS SHALL BE 3/4" DIAMETER A325 STRUCTURAL BOLTS UNLESS OTHERWISE NOTED.
4. WHERE NO WELD SYMBOL IS SHOWN, ASSUME FILLET ALL AROUND, WITH SIZE EQUAL TO THE LESSER OF 3/16" OR THE MINIMUM THICKNESS OF ADJOINING FACES, UNLESS NOTED.
5. STRUCTURAL STEEL PLATES, ANGLES, AND CHANNELS SHALL CONFORM TO CSA G40.21-300W, G40.21,-350W CLASS C FOR HSS AND W SECTIONS.
6. WELDING SHALL CONFORM TO THE REQUIREMENTS OF CSA STANDARDS W59 AND SHALL BE UNDERTAKEN BY A FABRICATOR AND ERECTOR FULLY APPROVED BY THE CANADIAN WELDING BUREAU TO THE REQUIREMENTS OF CSA STANDARDS W47, DIVISION 1 OR DIVISION 2.1.
7. FIELD VERIFY ALL DIMENSIONS PRIOR TO MANUFACTURING.
8. ALL STRUCTURAL STEEL TO BE FINISHED AS APPROVED BY THE CONTRACTOR/OWNER.
9. ALL HARDWARE TO BE TORQUED BY TURN-OF-NUT METHOD AS PER S16-19 23.7.2, AND TABLE 7.

DESIGN LOADS:

DESIGN LOADS ARE UNFACTORED UNLESS NOTED OTHERWISE:

MOBILE PLATFORM LOADS:

DEAD LOADS:

-SELF-WEIGHT OF STRUCTURE

LIVE LOADS:

- OCCUPANCY LOAD = 800 LBS (MAX. 2 PEOPLE)

GUARD LOADS:

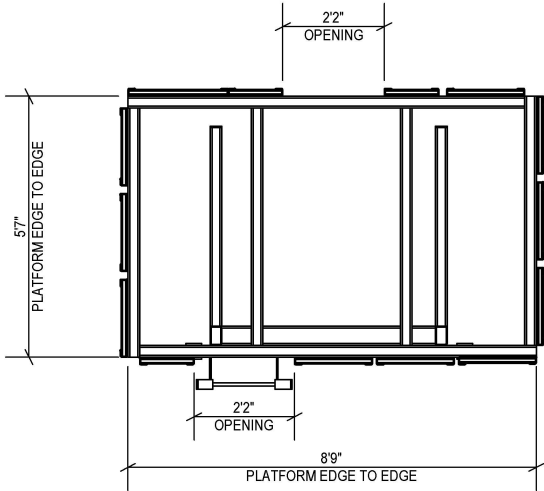
- HORIZONTAL POINT LOAD AT ANY LOCATION ON GUARD = 1 kN

- HORIZONTAL LOAD ON TOP RAIL = 0.75 kN/m (DISTRIBUTED)

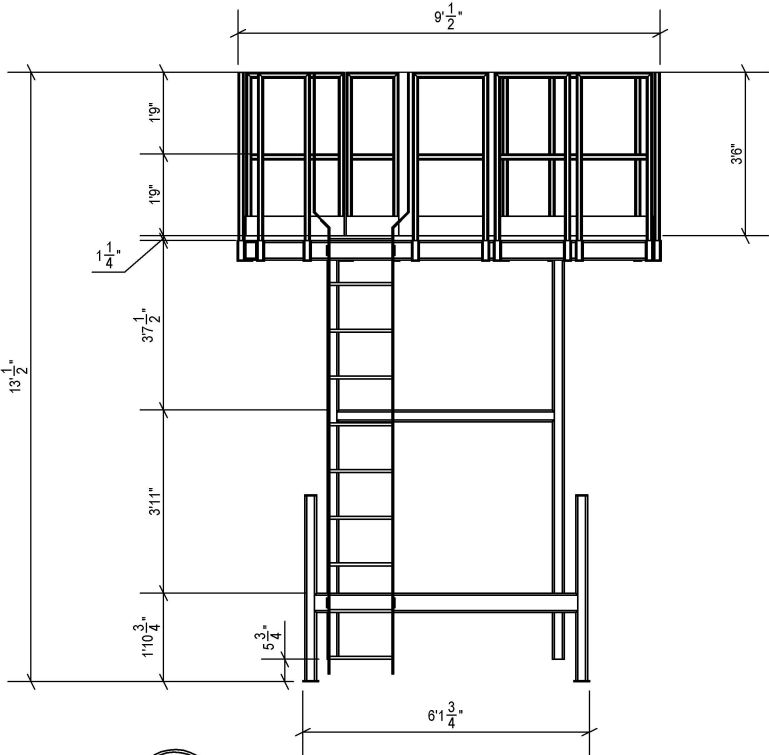
- VERTICAL LOAD ON TOP RAIL = 1.5 kN/m (DISTRIBUTED)

- CONCENTRATED LOAD OF 0.5 kN OVER 100mm BY 100mm AREA AT ANY POINT ON THE ELEMENT OR ELEMENTS WITHIN THE GUARD.

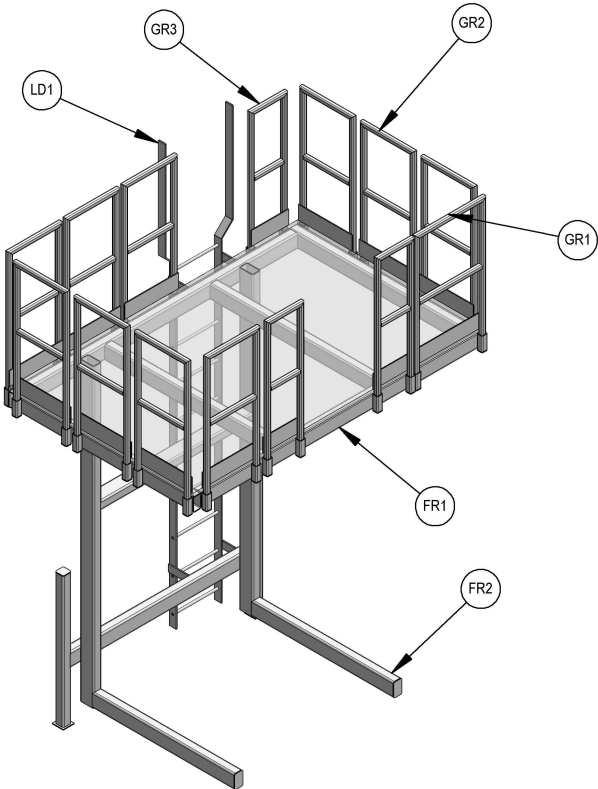
PART NO.	QTY.	DESCRIPTION	WEIGHT (LBS)
FR1	1	PLATFORM FRAME	462.11
FR2	1	VERTICAL FRAME	522.36
LD1	1	FIXED ACCESS LADDER	102.62
GR1	1	2'-0" GUARDRAIL	45.23
GR2	10	1'-6" GUARDRAIL	39.96
GR3	3	1'-0" GUARDRAIL	34.68



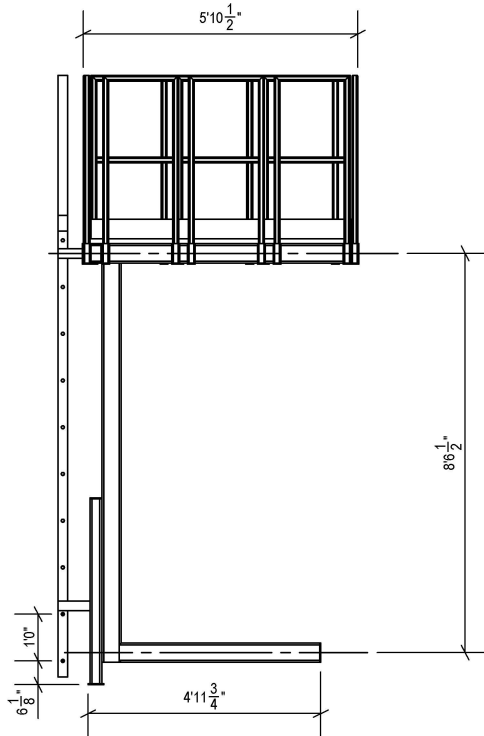
2 MOBILE PLATFORM - TOP VIEW
SCALE: 1:48



3 MOBILE PLATFORM - FRONT VIEW
SCALE: 1:48



1 MOBILE PLATFORM - ISOMETRIC VIEW
SCALE: 1:48



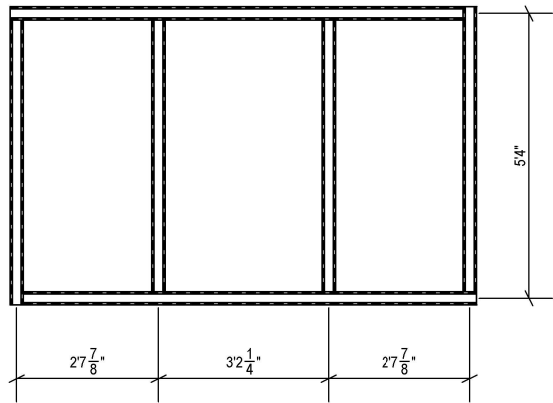
4 MOBILE PLATFORM - FRONT VIEW
SCALE: 1:48

119 PINEBUSH RD, UNIT C
CAMBRIDGE, ON Phone: 519-267-6789
N1R 7J8 Fax: 1-866-388-9659
www.waddelleng.com info@waddelleng.com

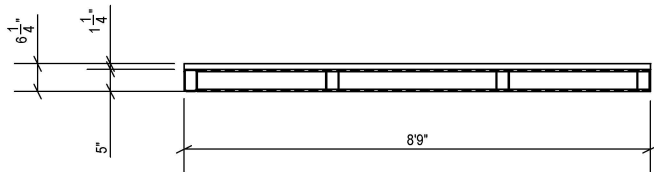
ENGINEER STAMP

NOT FOR CONSTRUCTION

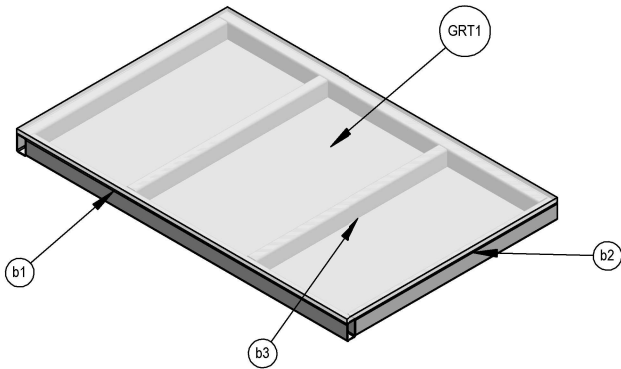
CLIENT: BULLET TRADE SERVICE	
DRAWING TITLE: Mobile Platform Assembly	
PROJECT: Posi-Plus Technologies Mobile Platform 150 SOUTHGATE DR, GUELPH ONTARIO, N1G4P5	
DRAWN BY: TC	DATE: 2025-12-16
SCALE: As Noted	SHEET NO: S1
PROJECT NO: 25-12-033	



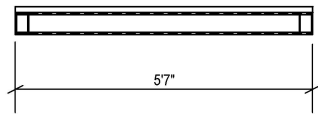
2
S2
FR1 - TOP VIEW
SCALE: 1:42



3
S2
FR1 - FRONT VIEW
SCALE: 1:42

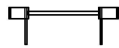


1
S2
FR1 - ISOMETRIC VIEW
SCALE: 1:42

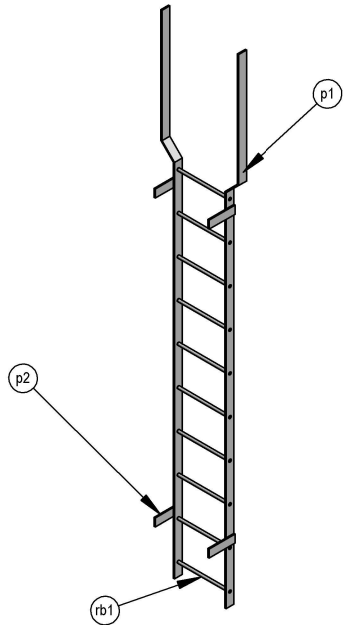


4
S2
FR1 - SIDE VIEW
SCALE: 1:42

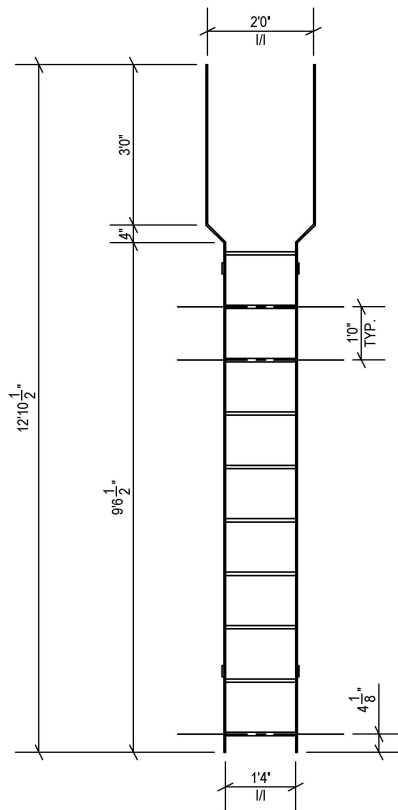
PART NO.	QTY.	DESCRIPTION	LENGTH	MATERIAL	WEIGHT (LBS.)
b1	2	HSS5x3x0.25	8'6"	G40.21 350W	103.82
b2	2	HSS5x3x0.25	5'4"	G40.21 350W	65.14
b3	2	HSS5x3x0.25	5'1"	G40.21 350W	62.09
p1	2	2 1/2" x 3/8" FB LADDER STRINGER		G40.21 300W	41.52
p2	4	PLATE, 3/8" x 2 1/2" x 8 1/4"		G40.21 300W	2.19
rb1	10	3/4" RB LADDER RUNGS		G40.21 300W	2.05
GRT1	1	1"x1/8" 19-W-4 SERRATED BAR GRATING			



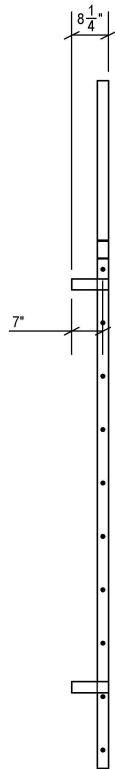
6
S2
LD1 - TOP VIEW
SCALE: 1:42



5
S2
LD1 - ISOMETRIC VIEW
SCALE: 1:42



7
S2
LD1 - FRONT VIEW
SCALE: 1:42



8
S2
LD1 - SIDE VIEW
SCALE: 1:42



119 PINEBUSH RD, UNIT C
CAMBRIDGE, ON N1R 7J8
Phone: 519-267-6789
Fax: 1-866-388-9659
www.waddelleng.com info@waddelleng.com

ENGINEER STAMP

NOT FOR CONSTRUCTION

CLIENT:

BULLET TRADE SERVICE

DRAWING TITLE:

FR1 & LD1 - Views & Cut Lists

PROJECT:

Posi-Plus Technologies Mobile Platform

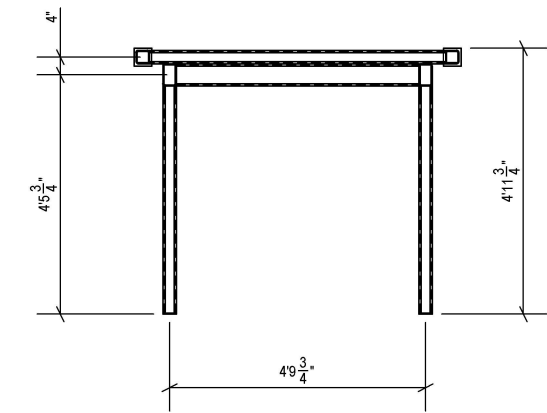
150 SOUTHGATE DR, GUELPH
ONTARIO, N1G4P5

DRAWN BY: TC DATE: 2025-12-16

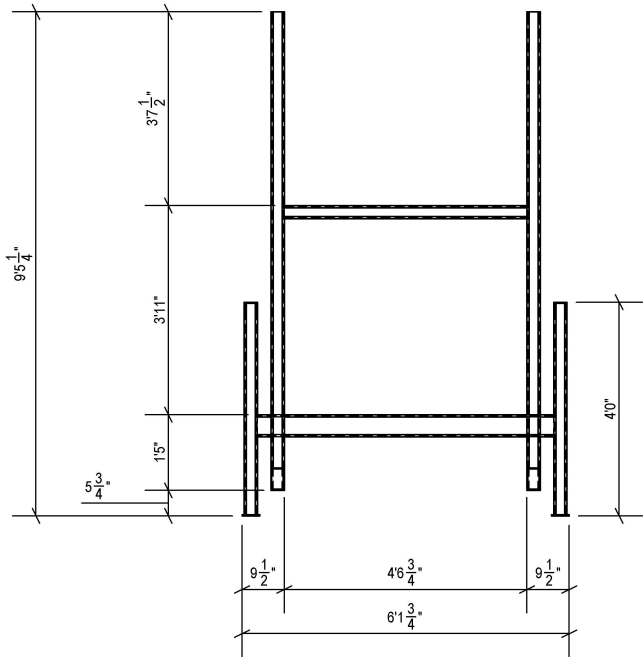
SCALE: As Noted SHEET NO:

PROJECT NO: 25-12-033

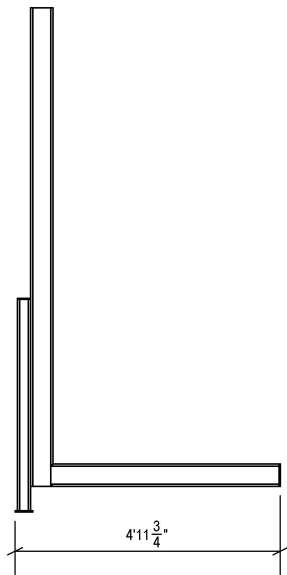
S2



2
S4 FR2 - TOP VIEW
SCALE: 1:42

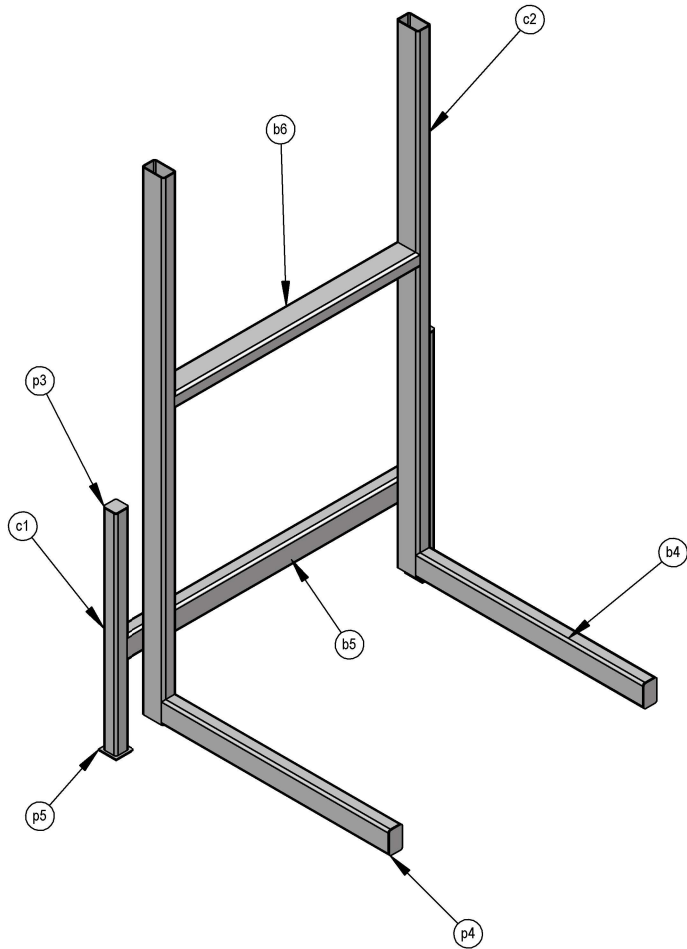


3
S4 FR2 - FRONT VIEW
SCALE: 1:42



4
S4 FR2 - SIDE VIEW
SCALE: 1:42

PART NO.	QTY.	DESCRIPTION	LENGTH	MATERIAL	WEIGHT (LBS.)
c1	2	HSS3x3x0.25	3'11 1/2"	G40.21 350W	34.88
c2	2	HSS5x3x0.25	8'11 1/2"	G40.21 350W	109.42
b4	2	HSS5x3x0.25	4'3 1/2"	G40.21 350W	52.04
b5	1	HSS5x3x0.25	5'7 3/4"	G40.21 350W	68.20
b6	1	HSS5x3x0.25	4'7 3/4"	G40.21 350W	55.87
p3	2	PLATE, 1/4" x 3" x 3"		G40.21 300W	0.62
p4	2	PLATE, 1/4" x 3" x 5"		G40.21 300W	1.05
p5	2	PLATE, 1/4" x 4" x 4"		G40.21 300W	1.13



1
S4 FR2 - ISOMETRIC VIEW
SCALE: 1:30

WADDELL
ENGINEERING LTD.

119 PINEBUSH RD, UNIT C
CAMBRIDGE, ON Phone: 519-267-6789
N1R 7J8 Fax: 1-866-388-9659
www.waddelleng.com info@waddelleng.com

ENGINEER STAMP

NOT FOR CONSTRUCTION

CLIENT:
BULLET TRADE SERVICE

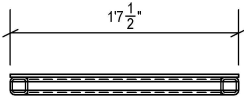
DRAWING TITLE:
FR1 - Views & Cutlist

PROJECT:
Posi-Plus Technologies Mobile Platform
150 SOUTHGATE DR, GUELPH
ONTARIO, N1G4P5

DRAWN BY: TC	DATE: 2025-12-16
SCALE: As Noted	SHEET NO:
PROJECT NO: 25-12-033	S4

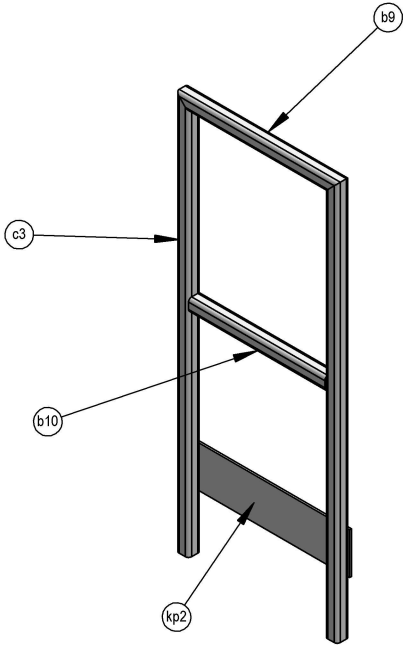
PART NO.	QTY.	DESCRIPTION	LENGTH	MATERIAL	WEIGHT (LBS.)
c3	2	HSS2x2x0.1875	4' 1/4"	G40.21 350W	12.04
b9	1	HSS2x2x0.1875	1'7 1/2"	G40.21 350W	4.56
b10	1	HSS2x2x0.1875	1'4 1/2"	G40.21 350W	4.18
kp2	1	PLATE, 1/4" x 5" x 1'7 1/2"		G40.21 300W	6.91

NOTE: QUANTITIES SHOWN ARE FOR CONSTRUCTION OF 1 GUARD RAIL SECTION. 10 REQUIRED



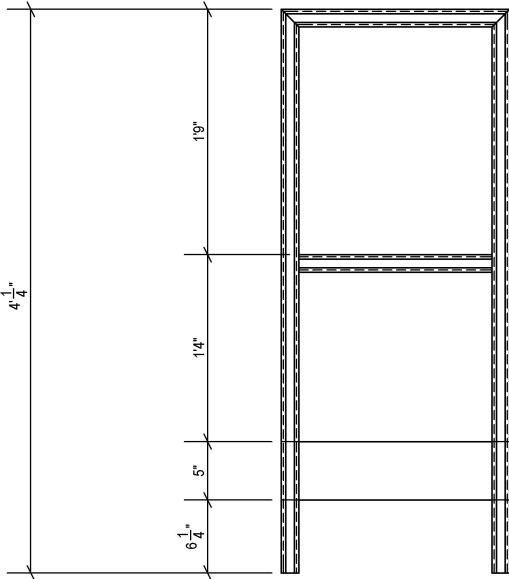
2
S6

GR2 - TOP VIEW
SCALE: 1:16



1
S6

GR2 - ISOMETRIC VIEW
SCALE: 1:16




3
S6

GR2 - FRONT VIEW
SCALE: 1:16



4
S6

GR2 - SIDE VIEW
SCALE: 1:16



119 PINEBUSH RD, UNIT C
CAMBRIDGE, ON N1R 7J8
www.waddelleng.com

Phone: 519-267-6789
Fax: 1-866-388-9659
info@waddelleng.com

ENGINEER STAMP

NOT FOR CONSTRUCTION

CLIENT:
BULLET TRADE SERVICE

DRAWING TITLE:
GR2 (1'-6") - Views & Cut List

PROJECT:
Posi-Plus Technologies Mobile Platform
150 SOUTHGATE DR, GUELPH
ONTARIO, N1G4P5

DRAWN BY: TC
SCALE: As Noted

DATE: 2025-12-16
SHEET NO:

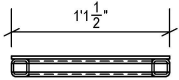
PROJECT NO:
25-12-033

S6

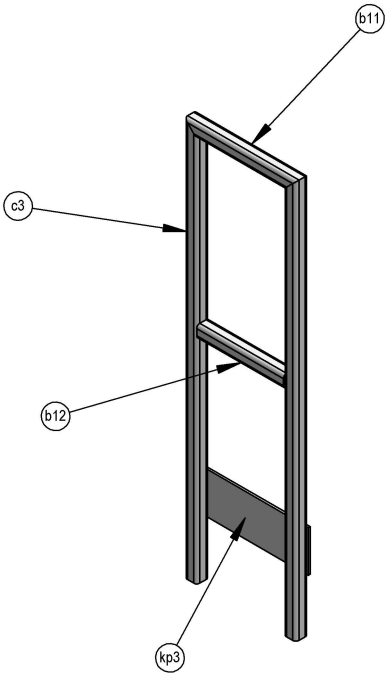
REV	BY	DATE	DESCRIPTION
0	TC	2025-12-17	ISSUED FOR REVIEW & COMMENT

PART NO.	QTY.	DESCRIPTION	LENGTH	MATERIAL	WEIGHT (LBS.)
c3	2	HSS2x2x0.1875	4' 1/4"	G40.21 350W	12.04
b11	1	HSS2x2x0.1875	1'1 1/2"	G40.21 350W	3.04
b12	1	HSS2x2x0.1875	10 1/2"	G40.21 350W	2.66
kp3	1	PLATE, 1/4" x 5" x 1'1 1/2"		G40.21 300W	4.79

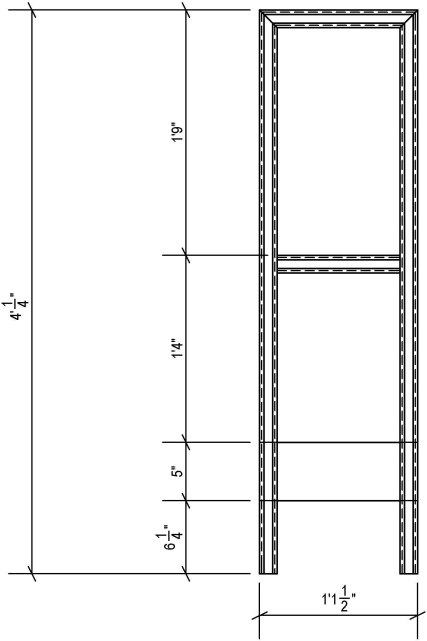
NOTE: QUANTITIES SHOWN ARE FOR CONSTRUCTION OF 1 GUARD RAIL SECTION. 3 REQUIRED



2
S7
GR3 - TOP VIEW
SCALE: 1:16



1
S7
GR3 - ISOMETRIC VIEW
SCALE: 1:16



3
S7
GR3 - FRONT VIEW
SCALE: 1:16



4
S7
GR3 - SIDE VIEW
SCALE: 1:16



119 PINEBUSH RD, UNIT C
CAMBRIDGE, ON N1R 7J8
www.waddelleng.com

Phone: 519-267-6789
Fax: 1-866-388-9659
info@waddelleng.com

ENGINEER STAMP

NOT FOR CONSTRUCTION

CLIENT: BULLET TRADE SERVICE	
DRAWING TITLE: GR3 (1'-0") - Views & Cut List	
PROJECT: Posi-Plus Technologies Mobile Platform 150 SOUTHGATE DR, GUELPH ONTARIO, N1G4P5	
DRAWN BY: TC	DATE: 2025-12-16
SCALE: As Noted	SHEET NO:
PROJECT NO: 25-12-033	S7